

Coverdell Stroke Program



Overarching Goal: Improve equity and quality in stroke prevention and care with a focus on those at highest risk of stroke across the continuum of care.

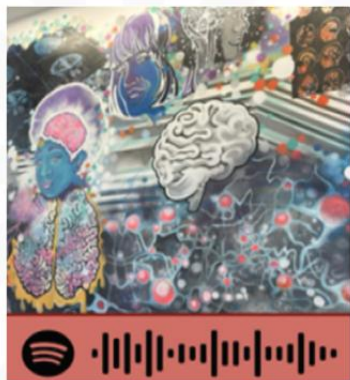
- ▶ Quality Improvement and Systems Change
- ▶ Awardees:
 - ▶ Atrium Health Wake Forest Baptist Hospital
 - ▶ Moose Pharmacy
 - ▶ UNC Chapel Hill
 - ▶ UNC Rex
- ▶ 5 Years with these entities beginning in Year 2 of the grant cycle: July 1, 2025



SPOTIFY

MAY IS STROKE & MENTAL HEALTH AWARENESS MONTH

PLAYLIST



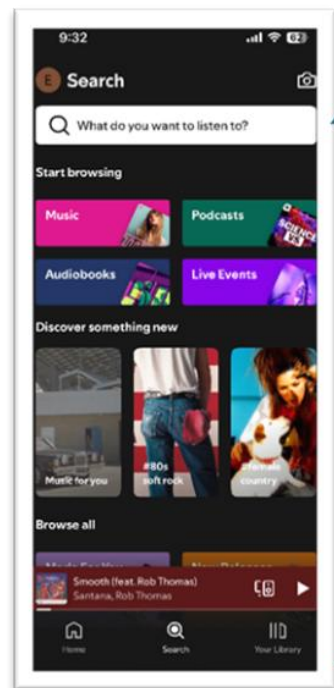
SEARCH, LISTEN & SAVE

MENTAL HEALTH MATTERS NHHNHRMC

Want to add a song? Email the title to
erika.yourkiewicz@novanthealth.org

From Novant Health New Hanover
Regional Medical Center

1. Download the Spotify App
2. Search/magnifying glass (bottom center)
3. Type in “Mental Health Matters NHHNHRMC” or press the camera icon and hover over below image.
4. Save the playlist and enjoy!





MAP-STROKE PROJECT

North Carolina

Robin Jones, MSN, RN, SCRNP
Staci Smith, BSN, RN, ASC-BC

MAP-STROKE PROJECT

What is it?

Why are we mapping?

The logo for Mapstroke, featuring the word "map" in red and "stroke" in dark grey. The letter "o" in "stroke" is replaced by a red location pin icon.

MAP-STROKE PROJECT

WORLDWIDE BURDEN OF STROKE



THE **MAP-STROKE** PROJECT: A COMPUTATIONAL STRATEGY TO IMPROVE ACCESS TO ACUTE STROKE CARE

(GLOBAL INITIATIVE TO MAP THE AVAILABILITY OF STROKE RESOURCES THROUGHOUT THE WORLD)

- Access to acute stroke treatment varies significantly across the globe, with substantial disparities in low- and middle-income countries.
- To address this issue, it is crucial to establish a standardized approach for identifying current regional coverage and recommending locations for new stroke centers.



Led by Global PI, Dr Leonardo Carbonera, Vascular Neurologist, South America

MAP-STROKE: NORTH CAROLINA

- In the U.S., stroke center distribution is inconsistent across states, with around 77% of rural counties deemed "medical deserts" due to a lack of healthcare services. **“Abstract TP84: Mapping the Access to Acute Stroke Care in Oklahoma - Preliminary Results of the MAPSTROKE Project” Stroke. AHA/ASA Journals.**



Dr. Faddi Saleh Velez

Vascular Neurologist

University of Oklahoma

National PI for the MAP-STROKE project in the USA.

Step

1

- List all NC hospitals longitude/latitude
- Phone number, contact person



Step

2

- Will gather data on the availability of critical resources like thrombolysis, computerized tomography (CT), and neurology services.

Step

3

- quantitative spatial analysis using a geographic mapping tool to analyze travel distances from each area to the nearest three hospitals capable of providing acute reperfusion therapies to identify regions with limited access.

NORTH CAROLINA HOSPITALS

119 - FACILITIES

67- STROKE CERTIFIED FACILITIES

12 – PERFORM THROMBECTOMIES



WANT TO HELP?

MAP-STROKE NC

- Can we list the stroke coordinator as the primary contact for your facility?
- What hospitals transfer acute stroke to your hospital?



CONTACT INFORMATION:

Robin Jones
robinncrn@gmail.com

Staci Smith
SMCSmith@firsthealth.org
910-715-5925