



## **NORTH CAROLINA HEALTH INFORMATION EXCHANGE AUTHORITY**

Stroke Registry Demonstration  
Stroke Advisory Council  
February 15, 2023

Anna Bess Brown, Executive Director, Justus-Warren  
Heart Disease & Stroke Prevention Taskforce

Kim Webster, HIE Business Development Specialist

Jonas Dusenberry, HIE Application Systems Specialist

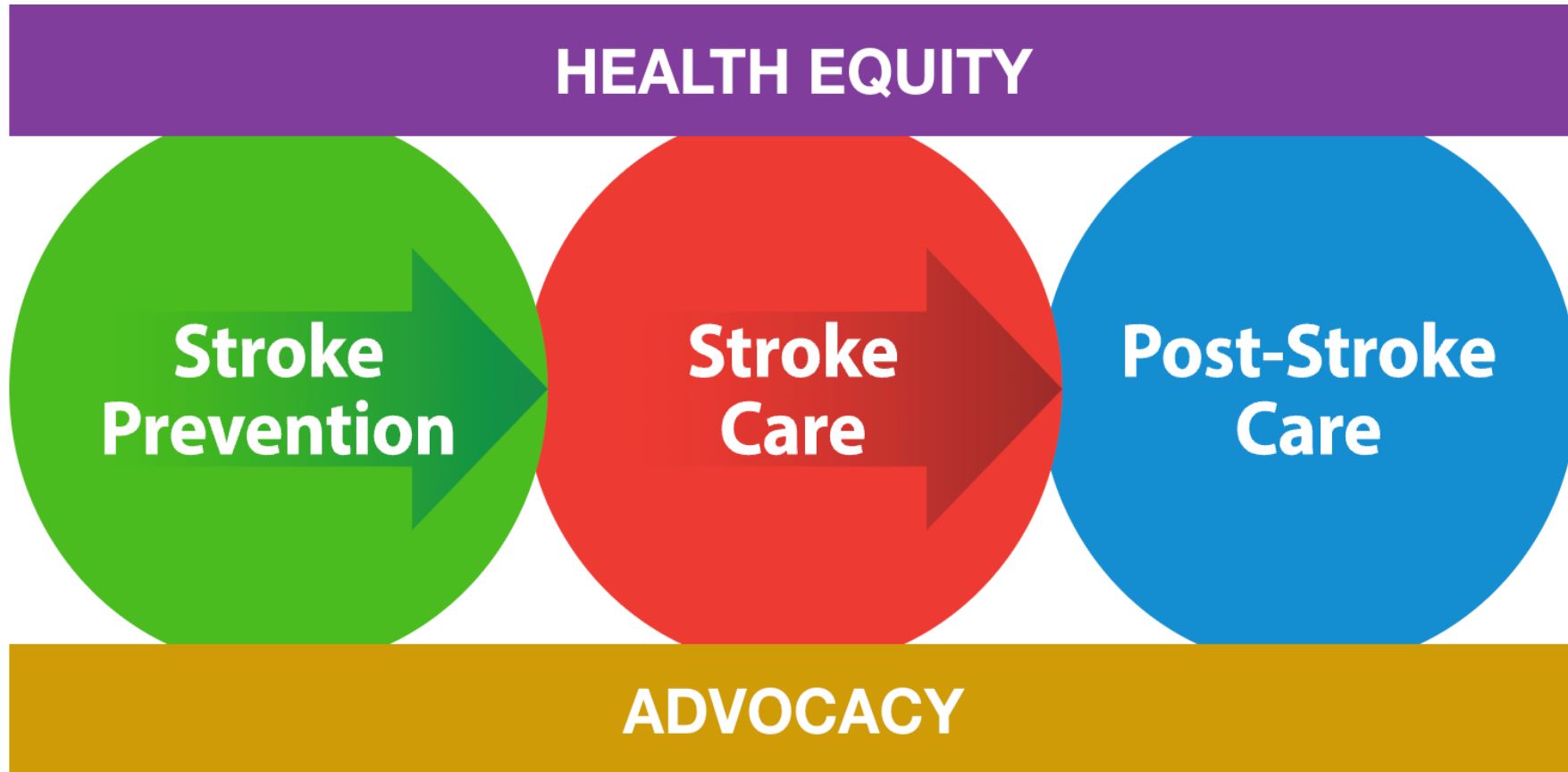
Matt Schirmer, SAS Senior Manager, Health  
Informatics & Consulting



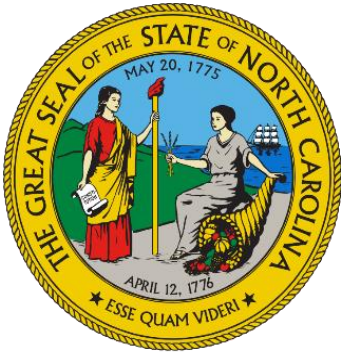
# Topics

- Background on the Stroke Registry
- NC HealthConnex Overview
- Summary of Stroke Registry Development
- Demonstration
- Future Work Planned
- Questions and Discussion

# NC Stroke System of Care



# Partnerships



NC DEPARTMENT OF  
**HEALTH AND HUMAN SERVICES**

Division of Public Health

**Community & Clinical**  
**CONNECTIONS**  
**for Prevention & Health**  
**Branch** NORTH CAROLINA  
DIVISION OF PUBLIC HEALTH



# Goals of NC Coverdell Stroke Program

- Build a Stroke Registry within the NC HIE
- Leverage EHR and HIT to Monitor and Address Disparities
- Strengthen the Stroke System of Care
- Provide Workforce Development Training
- Build and Strengthen Partnerships
- Fund QI Projects



# NC HealthConnex Overview

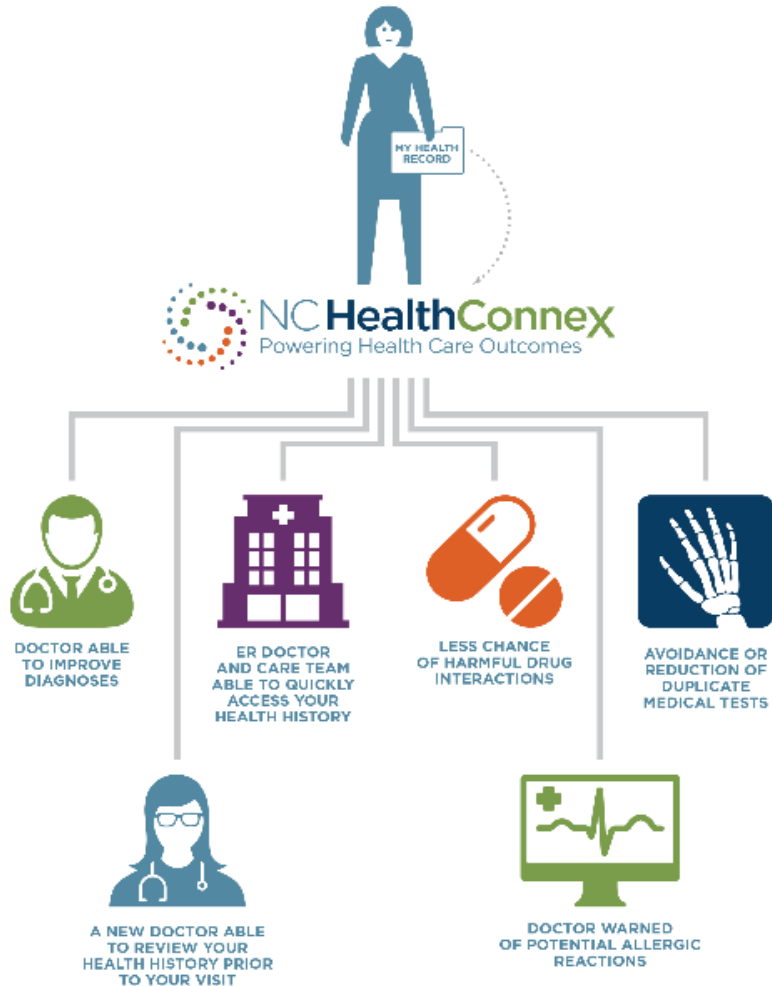
# What is Health Information Exchange?

A health information exchange (HIE) is a secure, electronic network that gives authorized health care providers the ability to access and share health-related information across a statewide information highway.



# Health Information Exchange

## Benefits



- ✓ **A full “picture” of a person’s health, including ambulatory visits, hospitalizations and medications**
- ✓ **Reduction in valuable staff time spent phoning and faxing other providers involved in a patient’s care to track down health information**
- ✓ **Timely access to important health events as they happen to patients (near, real-time notifications)**
- ✓ **Improved, more accurate and timely medication reconciliation that reduces errors and avoids unnecessary tests**
- ✓ **Access to test results, reducing costly duplicative tests and gaps in treatment**



# Who We Are



STATE DESIGNATED



SECURE



PARTNERSHIP

- The North Carolina General Assembly created the North Carolina Health Information Exchange Authority (NC HIEA) in 2015 to facilitate the creation of a modernized HIE to better serve North Carolina's health care providers and their patients.  
(NCGS 90-414.7)
- Housed within the Department of Information Technology's Government Data Analytics Center (GDAC).
- Technology partner is SAS Institute.
- Twelve-member [Advisory Board](#) made up of various health care representatives that includes the DHHS Secretary, DIT Secretary and GDAC Director.

# NC HealthConnex by the Numbers

We connect health care providers to safely and securely share health information through a trusted network to improve health care quality and outcomes for North Carolinians.



## NC HealthConnex, By the Numbers:

- 60,000+ providers with contributed records
- 9,000+ health care facilities live submitting data, including 140 hospitals
- 5,000+ health care facilities in onboarding
- 150 million+ continuity of care documents (CCDs)
- 11 million+ unique patient records with clinical documents
- 80 Electronic Health Record (EHR) vendors live
- 22+ border and interstate HIEs connected via the eHealth Exchange and the Patient Centered Data Home, including connections to the VA and DoD

# See Who's Connected

## NC HealthConnex Participants | NC HIEA



| Status               | Description  |
|----------------------|--|
| Development underway | Connection build   |
| Intake               | On hold  |
| Live in production   | Sending data to NC HealthConnex                              |
| Live not receiving   | Live connection but not sending data or sending limited data |

Showing 1 to 4 of 4 entries

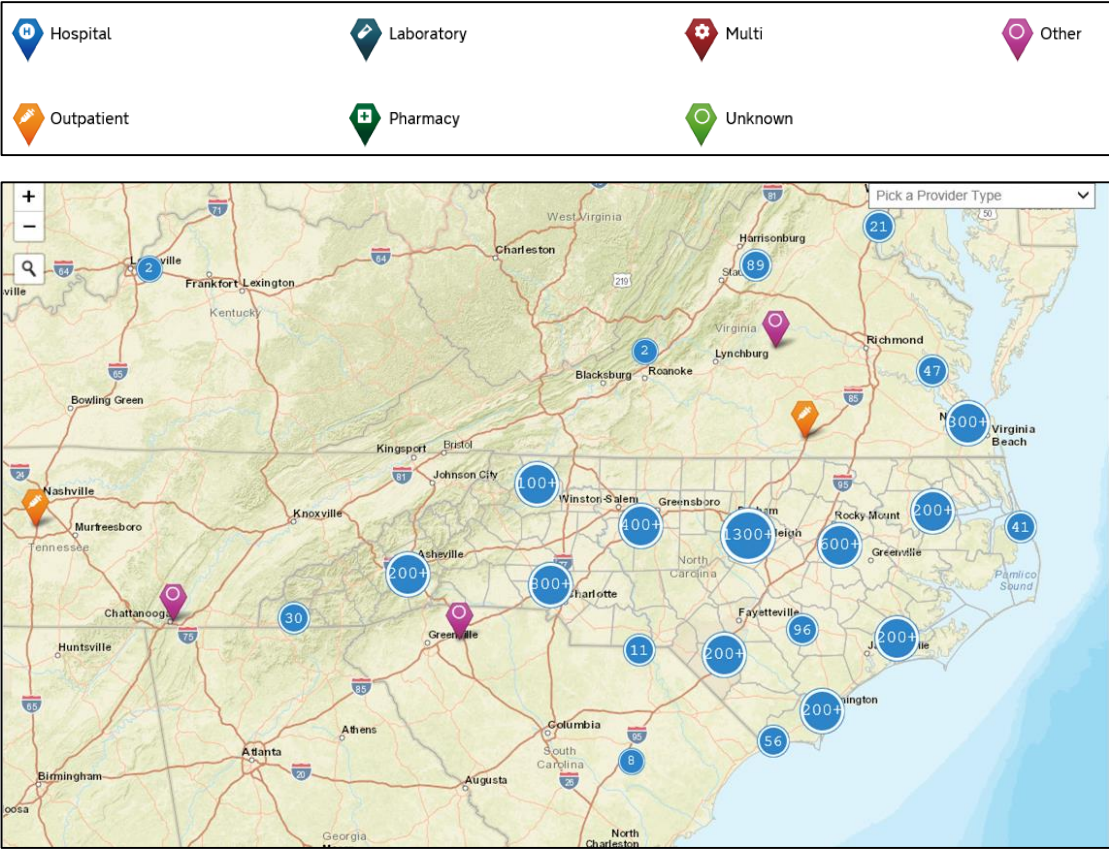
Export to Excel 

Show 50 entries

Search:

| Participant Name  | Participant Type              | City       | Status             |
|---|-------------------------------|------------|--------------------|
|  AUDIOLOGY AND HEARING AID CENTER          | SPEECH, LANGUAGE, AND HEARING | GREENSBORO | LIVE IN PRODUCTION |
|  CHILDREN'S HEALTH CENTER SPEECH PATHOLOGY | SPEECH, LANGUAGE, AND HEARING | DURHAM     | LIVE IN PRODUCTION |

## NC HealthConnex Participant Map | NC HIEA





# NC HealthConnex Services

## NC HealthConnex Suite of Services

### Exchange

Discover new opportunities to exchange patient records and improve patient outcomes through the NC HealthConnex Clinical Portal.

### NC\*Notify

Gain significant insights into patients' health care activity across North Carolina. NC\*Notify is a subscription-based service that notifies providers as their patients receive services across the care continuum.

### Controlled Substance Reporting System

NC HealthConnex is working with the N.C. Department of Health and Human Services and Appriss Health to combat the opioid epidemic in North Carolina.

### Promoting Interoperability & Meaningful Use

NC HealthConnex helps providers meet specific requirements and measures set by the Centers for Medicare and Medicaid Services.

Foundation

Exchange

Notifications

### Public Health Reporting

Access reporting through the N.C. Immunization Registry, Diabetes Registry and Electronic Lab Reporting.

### Direct Secure Messaging

This encrypted email tool allows clinicians to send patients' protected health information through a secure network.

### Data Quality

The NC HIEA places strong emphasis on NC HealthConnex's data quality.

### Training

NC HIEA offers training for using the clinical portal, direct secure messaging and other HIE features.

Pop Health & Analytics

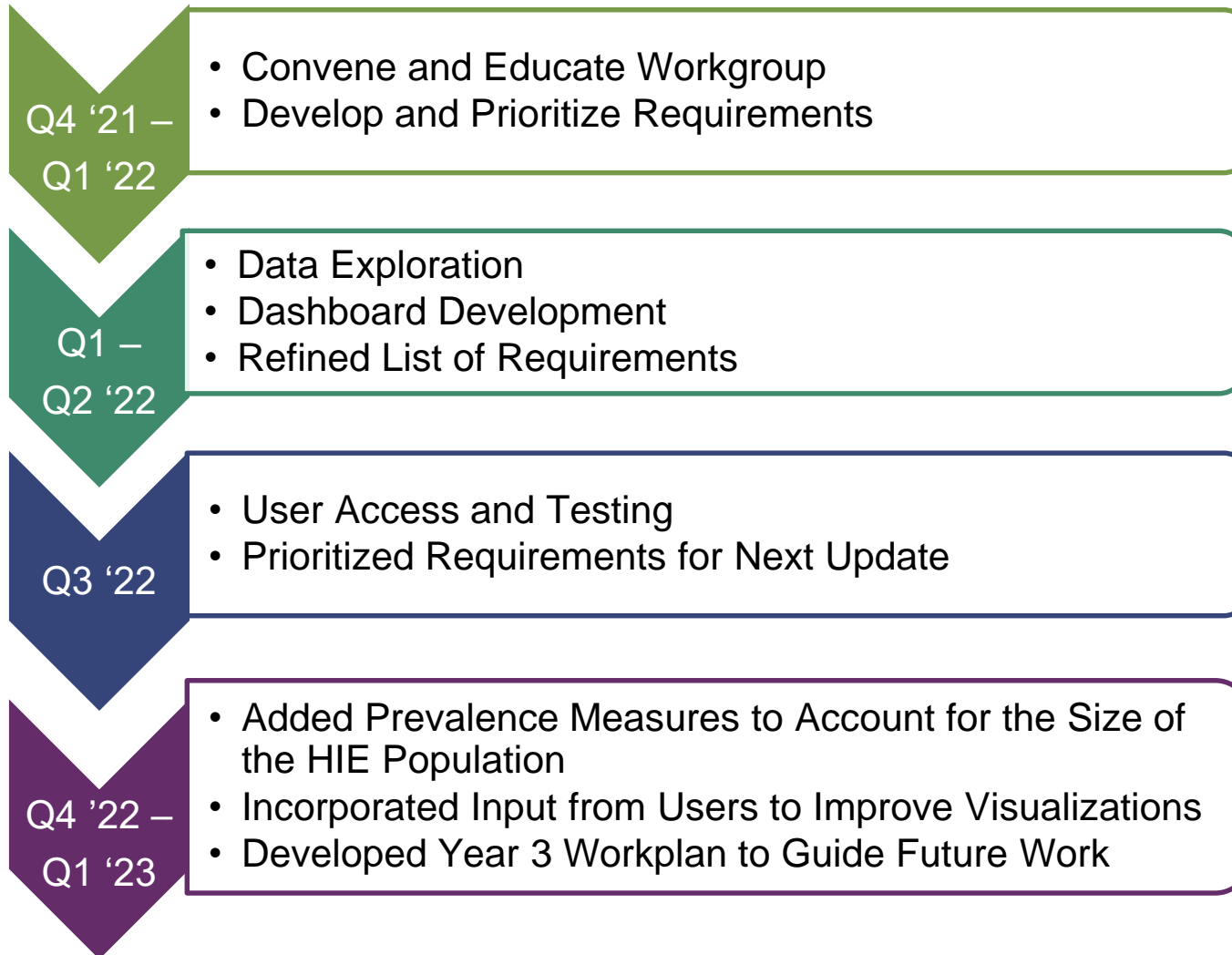
# Development of the Stroke Registry



# Stroke Registry – Workgroup Approach

- Convene workgroup of clinical and data experts
- Understand data available in NC HealthConnex & other similar NC HealthConnex Services
- Develop broad requirements across all functions of the Stroke Registry:
  - Define code lists (e.g., ICD-10, SNOMED) to classify stroke patients and identify clinical indicators
  - Identify key data fields for grouping and organizing the data (e.g., age group and gender of the patient)
  - Determine how to best visualize the information

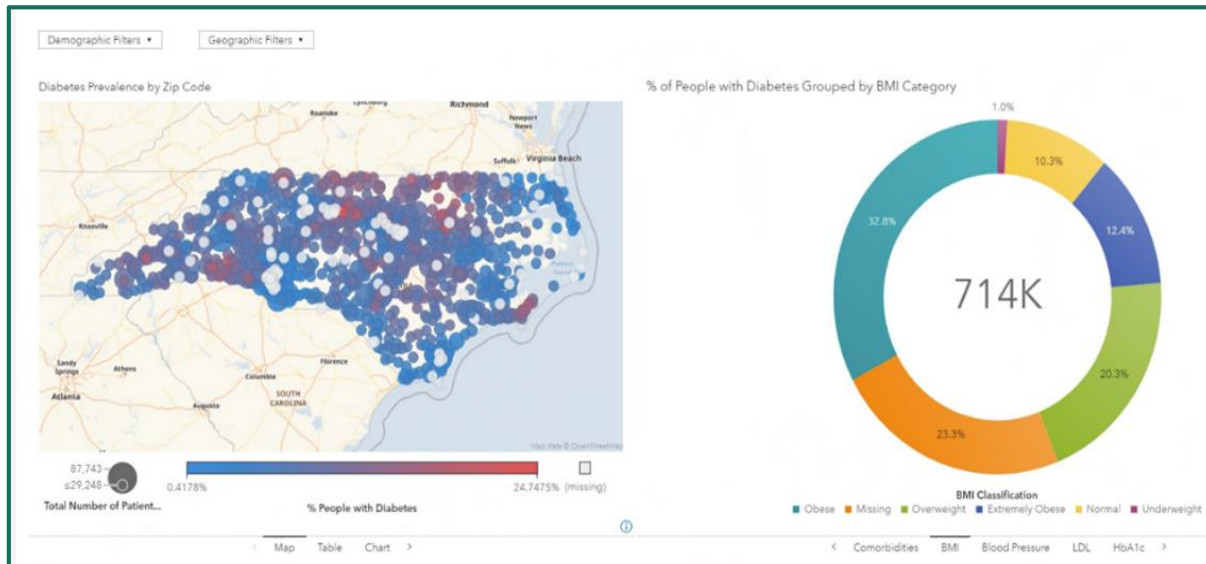
# Stroke Registry – Development Timeline & Milestones



# NC HealthConnex as a Population Health Tool

- Chronic Disease Registries
- Tracking Cohorts of Patients, e.g., COVID
- Data Extracts for Permitted Use Cases

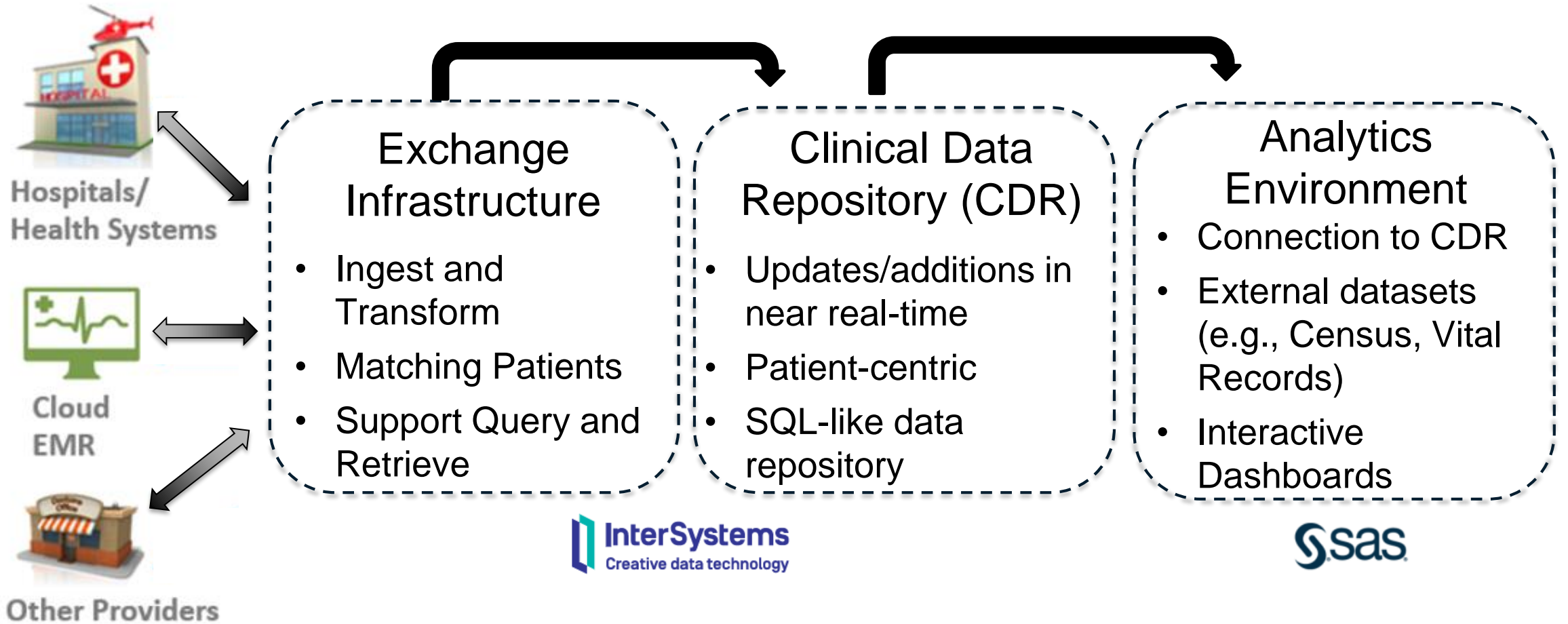
## Diabetes Registry



## Medicaid COVID Dashboard



# Stroke Registry – High Level Data Flow



# Demonstration



# Stroke Registry – Future Work

- Enhance the Stroke Registry Dashboard to include patients at risk for stroke
- Collaborate with the Stroke Workgroup to develop reporting capabilities to share patient level information from the Stroke Registry Dashboard to support quality improvement and performance reporting activities
- Integrate EMS data within the Stroke Registry Dashboard

# Questions and Discussion

**For more information visit,  
[www.nchealthconnex.gov](http://www.nchealthconnex.gov)**

**Tel: 919-754-6912**

**E-mail: [hiea@nc.gov](mailto:hiea@nc.gov)**