

The Role of the Stroke Coordinator

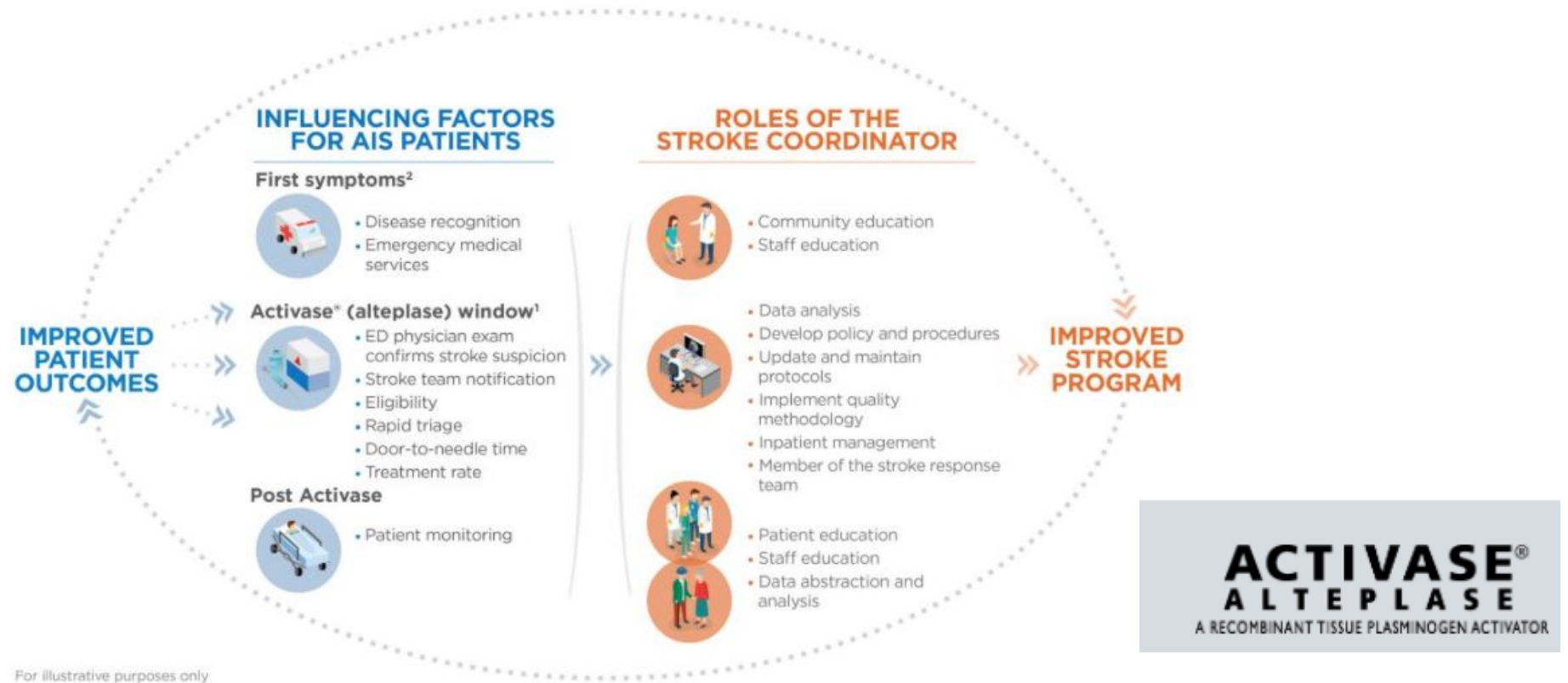
Robin Jones MSN, CNRN, SCRNP, NE-BC
Stroke Program Manager
Mission Health System
Asheville NC

Stroke Coordinator



The stroke coordinator is integral to patient outcomes and an institution's stroke program

The success of patient outcomes and the stroke program are dependent on the stewardship of the stroke coordinator.



For illustrative purposes only

Abstract P170: Stroke Coordinator Roles and Developmental Needs Around the Globe: An MT2020 International Survey
 Anne W Alexandrov, Sushanth Aroor, Sharon Biby, Jennifer Potter-Vig, Swatantra Kumar Soni, Manav Fakey, Violiza Inoa, Dileep R Yavagal, MT2020 Global Executive Committee
 Originally published 11 Mar 2021
https://doi.org/10.1161/str.52.suppl_1.P170Stroke.2021;52:AP170

Of the 70% of respondents interested in receiving SC development resources, the aspect deemed most important was “Improvement of Stroke Nursing Knowledge/Care” (71% non-USA/81% USA). “Development of Stroke Systems of Care” was deemed second most important by non-USA hospitals (53%), followed by “Development of Government Policy” (35%).

Table 1: Differences in Stroke Coordinator Roles

Variable	Non-USA (Role performed by MD = 63%)	USA (Role performed by RN = 95%)	Difference
Data Abstraction	38.5%	73%	$\chi^2=8$; $p=0.005$
Lead Meetings	50%	82%	$\chi^2=7.9$; $p=0.005$
Enter Quality Data	31%	55%	$\chi^2=3.7$; $p=0.054$
Staff Educator	61.5%	87%	$\chi^2=5.7$; $p=0.017$
Develop Policies & Procedures	50%	87%	$\chi^2=10.9$; $p=0.001$
Conduct Research	35%	41%	$p=NS$
Patient Educator	23%	73%	$\chi^2=16.2$; $p<0.001$
Educate MDs	38.5%	73%	$\chi^2=8$; $p=0.005$
Review Stroke Center Certification Standards	38.5%	82%	$\chi^2=13.6$; $p<0.001$
Update Evidence-Based Practices	31%	84%	$\chi^2=20.2$; $p<0.001$
Concurrent Chart Review	27%	86%	$\chi^2=25.2$; $p<0.001$
Attend Code Strokes	46%	75%	$\chi^2=5.9$; $p=0.015$
Point of Contact for the Stroke Program	35%	82%	$\chi^2=15.9$; $p<0.001$
Community Educator	27%	80%	$\chi^2=18.9$; $p<0.001$
Quality Improvement	46%	87%	$\chi^2=12.9$; $p<0.001$
EMS Education	15%	66%	$\chi^2=16.7$; $p<0.001$
Monitor EMS DX Accuracy	11.5%	54.5%	$\chi^2=12.8$; $p<0.001$

Team Leader/Team Player

Personal skills



LEADER



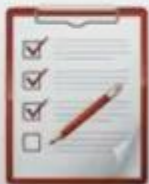
PARENT



INNOVATOR



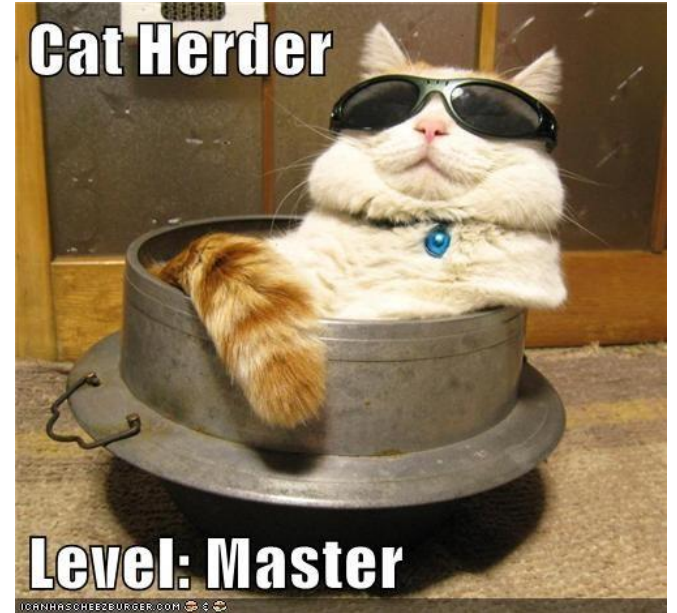
CHEERLEADER



ENFORCER



PEACEKEEPER



Lynchpin (noun) one that serves to hold together parts or elements that exist or function as a unit

Stroke Coordinator: *Lynchpin of the stroke team*

“Many hospital stroke programs fail, and the primary reason is they lack a strong stroke coordinator. Almost universally, programs that fail or backslide in performance are those [that] lost a stroke coordinator or did not have one and tried to tack it on to someone else's job. Having seen a few hundred stroke programs, I can unequivocally make this statement.”

-- Timothy Shepherd, PhD

Rodak 2013: Becker Hospital Review