



# DID YOU KNOW?



American  
Heart  
Association®

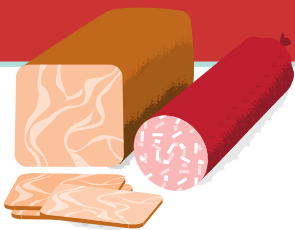
life is why®

## THESE SIX POPULAR FOODS CAN ADD HIGH LEVELS OF SODIUM TO YOUR DIET<sup>1</sup>

The American Heart Association recommends that you aim to eat less than 1,500 mg of sodium per day.



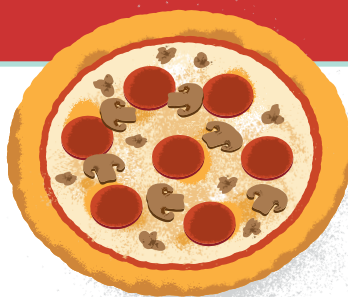
When you see the Heart-Check mark on a product, you know the food has been certified to meet nutritional criteria for heart-healthy foods, including sodium.



### COLD CUTS & CURED MEATS

One 2 oz. serving, or 6 thin slices, of deli meat can contain as much as half of your daily recommended dietary sodium. Look for lower-sodium varieties of your favorite lunch meats.

1



### PIZZA

A slice of pizza with several toppings can contain more than half of your daily recommended dietary sodium. Limit the cheese and add more veggies to your next slice.

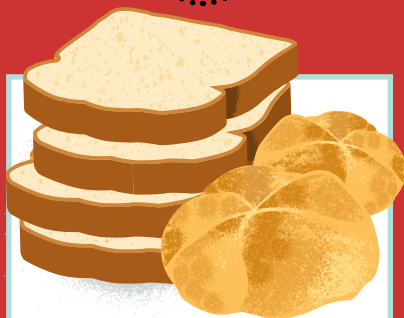
2



### SOUP

Sodium in one cup of canned soup can range from 100 to as much as 940 milligrams—more than half of your daily recommended intake. Check the labels to find lower sodium varieties.

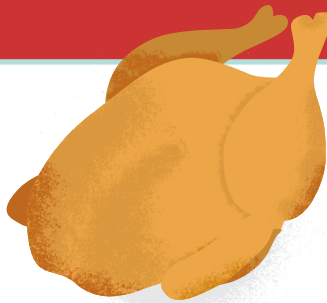
3



### BREADS & ROLLS

Some foods that you eat several times a day, such as bread, add up to a lot of sodium even though each serving may not seem high in sodium. Check the labels to find lower-sodium varieties.

4



### CHICKEN

Sodium levels in poultry can vary based on preparation methods. You will find a wide range of sodium in poultry products, so it is important to choose wisely.

5



### BURRITOS & TACOS\*

Two teaspoons of packaged taco seasoning can have 411 mg of sodium! Make your own by combining ½ teaspoon each of cumin, oregano, chili powder and garlic powder for a total of 42 mg of sodium.

6

<sup>1</sup> Centers for Disease Control and Prevention, Morbidity and Mortality Weekly Report (MMWR), Vital Signs: Food Categories Contributing the Most to Sodium Consumption—United States, 2007–2008, February 10, 2012 / 61(05):92–98.